

CyberMed R6

Fanless Medical Box PC



A Low Profile Embedded Medical Computer

Highly customizable, extremely powerful, and low profile. These three features make the CyberMed R6 stand out from the competition. This medical box PC has the ruggedness of an industrial PC with the medical grade certifications like UL/cUL and IEC 60601-1 certification plus fanless engineering that make this unit ideal for healthcare environments.

Medical Grade Certified



Intel Core Processor

The CyberMed R6 comes with a powerful 8th or 9th generation Intel core processor and up to 32GB of RAM, with stunning integrated Intel HD graphics, packing a big punch in a compact design.



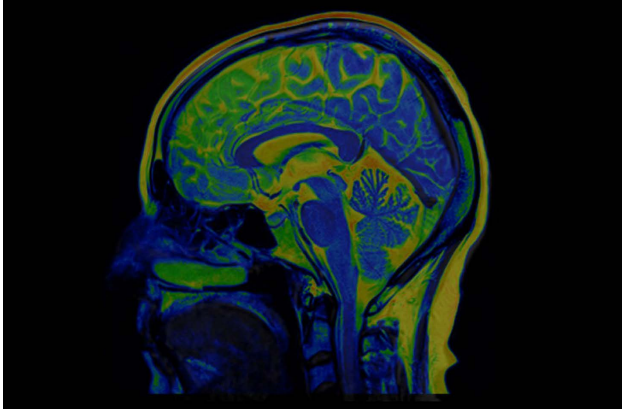
IEC/UL 60601-1 Certified

This medical computer has been engineered to meet the stringent 60601-1 electrical and radiation safety standards required for near patient use.



Engineered for Fanless Cooling

Fanless design prevents the computer from kicking up dust or sucking it in, has no moving part which gives it a longer life, and operates quietly so it doesn't cause a disruption to the environment.

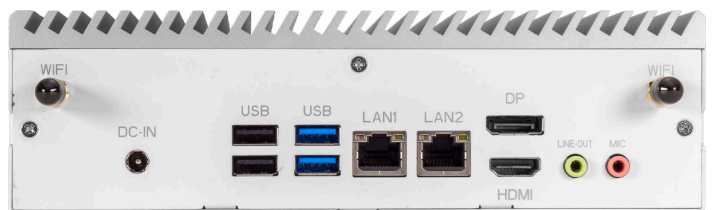
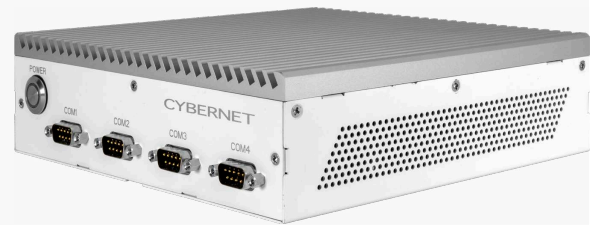


Built-In Versatility

- An extremely low profile and lightweight design means the CyberMed R6 can go anywhere.
- Optional mounting brackets for Wall, VESA, Din Rail or Rack Mount solutions.
- Support for PCIe NVMe SSD storage drives makes this ideal for 4k/8k medical imaging applications.

Built-In Stereo Speakers

The CyberMed R6 comes with two stereo speakers that are great for any number of applications. Use it for patient monitoring and alert systems, or mount it underneath a patient table for patient entertainment. This can even be used for telemedicine consultations.



Built with Customization & Compatibility in Mind

- Windows 10, Windows IoT, and Linux
- Intel Six Core Processor
- 1 x DDR4/DDR4L SO-DIMM (up to 32GB)
- 2 x 2.5" SSD up to 2TB
- Intel UHD Integrated Graphics
- 2 x USB 3.0 USB Ports, 2 x USB 2.0 Ports, 1 x HDMI
- 2 x RS232 Serial Ports, 2 x Rs232/422/485 Ports
- 1 x M.2 (Full Size) M Key and PCIe x2/x4 Support
- 1 x M.2 (Half Size) E Key
- 1 x Mini PC (Full Size)

CYBERNET

Global Operations: US | UK | Taiwan | China | Australia

US Inquiries: sales@cybernet.us | +1.888.834.4577

Europe Inquiries: sales@cyberneteu.com | +44.845.539.1200

Asia Pacific Inquiries: sales@cybernet.com.tw | +02.7742.2318

Ready for your CyberMed R6?

Get Quote